



insoft Room Environment

This intelligent room climate monitoring solution empowers businesses to improve the well-being and performance of their workforce. By collecting various sensor data that characterize the quality of the office environment (e.g., temperature, relative humidity, carbon dioxide levels, illuminance), optimal working conditions can be created and maintained. This can serve as an important measure to promote employee health and increase productivity and innovation. Automated notifications can be triggered when certain thresholds are exceeded, allowing an ideal indoor air quality to be restored as quickly as possible.

insoft Room Environment can also be utilized for effective energy management – by recording and evaluating power consumption. To do this, individual consumers must be connected to an intelligent Bluetooth Low Energy socket (insoft Locator Beacon Smart Plug). The latter measures the power consumption and wirelessly transmits it to the web-based insoft software tools. Here, the consumption data can be viewed, and energy-saving plans can be stored.

insoft Room Environment can be used standalone or as an additional feature of the insoft Workplace Experience App. The system relies on cost-effective, low-maintenance Bluetooth Low Energy hardware, is non-intrusive, and integrates seamlessly with existing control systems.

This product is based on the software solution [insoft Sensors](#).



Environmental Data

Collecting sensor data helps companies create a healthy working environment for their staff. Relevant metrics are usually temperature, humidity, CO₂ levels, and possibly light intensity.

Analysis & Insights

Interpreting the gathered environmental sensor data helps with the monitoring and optimization of office spaces. That way, the health and productivity of personnel can be increased.



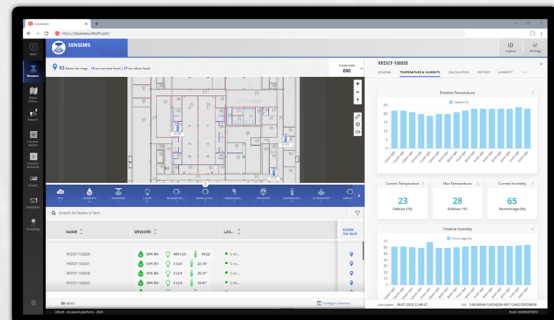
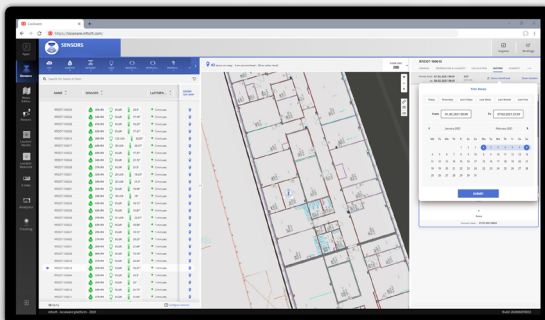
Room Climate Control

Sensor data can be integrated into a mobile app. With existing interfaces to the building control system, adjustments to the room climate, such as temperature regulation, can be made via the app.

Technical Implementation

Beacons with integrated sensors for collecting environmental data (“Sensor Beacons”) and insoft Locator Node Dongles or insoft Locator Nodes 1400 are installed on the premises. Based on the sensor functions, the beacons determine various values such as temperature and relative humidity in the area to be monitored. Via Bluetooth, the collected data is sent to a Locator Node Dongle or a Locator Node 1400 within range. From there, the data is transmitted to the insoft LocAware platform®, where it is intelligently processed and made available via web services.

insoft Room Environment | Impressions



Infrastructure Hardware

insoft Locator Node Dongle



AND

Sensor Beacon



Tag Hardware

insoft Locator Beacon Smart Plug



AND

OR: any thrid-party solution, implemented via API

Deployed Software



insoft Sensors



insoft Analytics



insoft Automation



More information

- [insoft Room Environment](#)

Imprint

©insoft GmbH 2024. This content is protected by copyright. All rights to content and design are with insoft GmbH. You may not copy, republish, modify or transfer this work without prior written and agreed consent of insoft. Our content is regularly edited and carefully checked. However, we do not accept any liability with respect to the correctness, completeness and current status of the information offered here. All mandatory legal details can be found under: www.insoft.com/company/contact



Publisher

insoft GmbH
Junkers-Ring 10A
85098 Großmehring
Germany

Contact

Phone +49 8407 939 680 0
Fax +49 8407 939 680 12
contact@insoft.com
www.insoft.com

