



insoft Wayfinding

In large buildings or on wide campus areas, there are many destinations that visitors and employees want to reach. insoft Wayfinding helps users to get to the desired location quickly and easily. The product can be used in buildings such as hospitals, airports, and office complexes across indoor and outdoor areas. The solution includes a map of the location that offers an overview of the premises. Furthermore, points of interest (POI) can be found directly on the map as well as via a search bar and the shortest way can be displayed. On mobile devices, the app can also offer real-time turn-by-turn navigation and further assist the user.



Digital 2D/3D Building Map

The solution provides 2D and 3D maps of the individual floors of all buildings on the site. The user can see their own location as well as relevant destinations on the premises.

Turn-by-Turn Navigation

The user can be navigated to any destination on the site. Using turn-by-turn navigation, the user follows the directional instructions displayed in the wayfinding app.



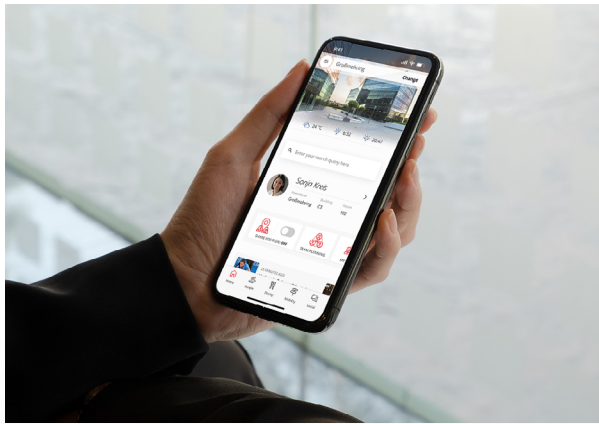
Points of Interest

In addition to the position of the destinations, further information about them can be displayed. This includes, for example, a brief description, equipment features, and the relevant contact person.

Implementation

insoft Wayfinding is integrated as a module in higher-level overall solutions such as the insoft Workplace Experience App. Corresponding solutions are available as an application, web, and desktop application, or kiosk system. On the functional side, turn-by-turn route information, automatic positioning, and uplifting features such as position sharing with colleagues (Colleague Finder) are thus available.

The use of our setup tools is always included in the solution. With insoft Maps Editor, insoft CMS, insoft Routes, and insoft Calibration, the application can be flexibly configured according to the customer's needs. Using our SDK (Software Development Kit) it is also possible to integrate the technology into existing applications.

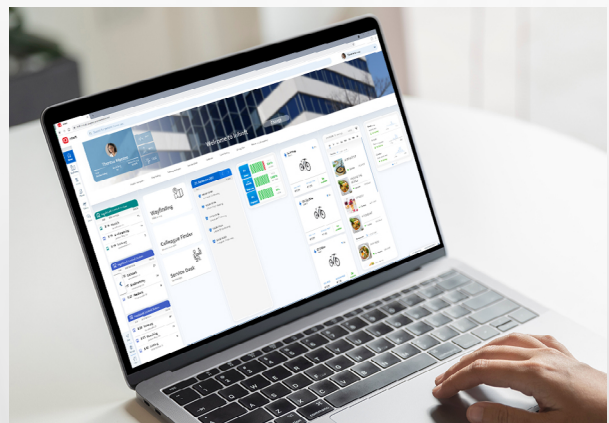


Mobile Application

The application can be accessed as a responsive web app via the smartphone browser and is also available as an iOS and Android application. The latter enables automatic positioning based on insoft Locator Beacons with an accuracy of < 50cm.

Web/Desktop Application

Users can effortlessly access the solution through the browser without the need for any installation. Real-time localization is facilitated by a dedicated desktop application. This enables the sharing of positions with colleagues for collaborative work at the same location, among other functionalities.



Terminal

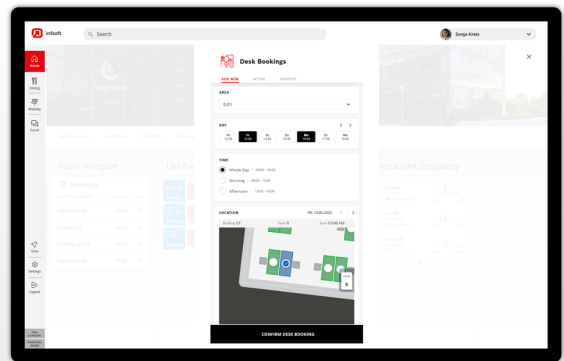
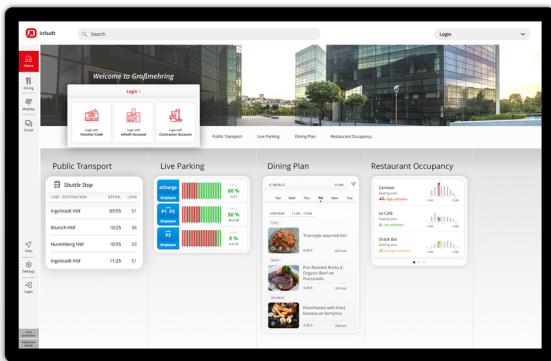
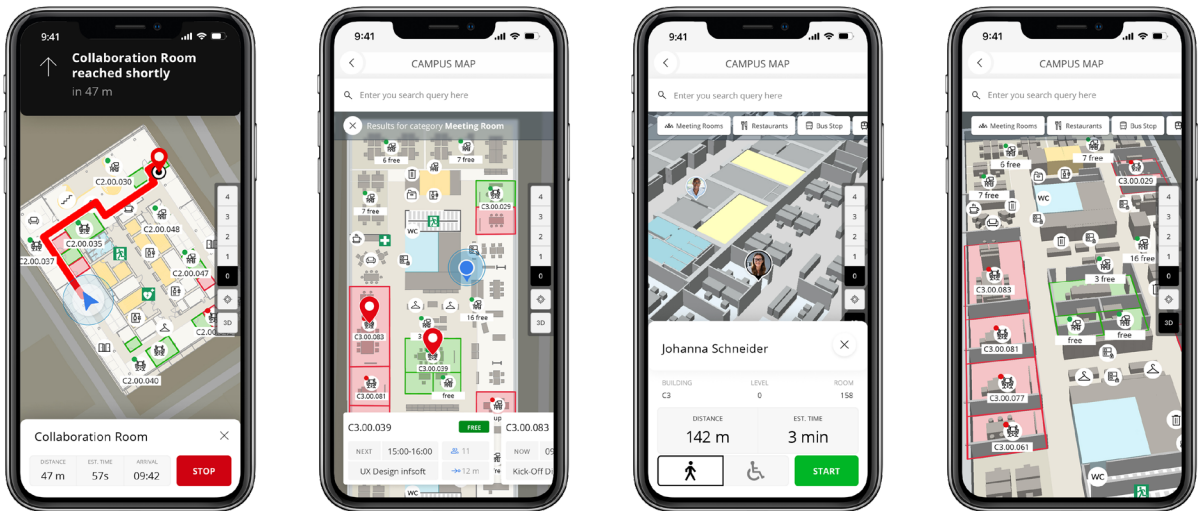
In addition to mobile employee and visitor applications, areas can be equipped with stationary terminals. This provides employees with a simple overview of the workstations and space resources that are available within a specific work area.

Technical Implementation

infosoft Locator Beacons are installed at regular intervals throughout in the building. The beacons emit signals which are received by the users' smartphones. Based on the received signals, the position of the device is determined directly in the smartphone app.

Inside the app, the user can select a navigation destination and follow the directional instructions to their destination.

infosoft Wayfinding | Impressions



Infrastructure Hardware

insoft Locator Node Dongle



Compact Wi-Fi gateway hardware for BLE components.

AND

insoft Locator Beacons



Battery-powered BLE/UWB hardware component.

Deployed Software



insoft Maps Editor



insoft CMS



insoft Routes



insoft Calibration



insoft Software Development Kit (SDK)



More Information

- [insoft Wayfinding](#)

Imprint

©insoft GmbH 2024. This content is protected by copyright. All rights to content and design are with insoft GmbH. You may not copy, republish, modify or transfer this work without prior written and agreed consent of insoft. Our content is regularly edited and carefully checked. However, we do not accept any liability with respect to the correctness, completeness and current status of the information offered here. All mandatory legal details can be found under: www.insoft.com/company/contact



Publisher

insoft GmbH
Junkers-Ring 10A
85098 Großmehring
Germany

Contact

Phone +49 8407 939 680 0
Fax +49 8407 939 680 12
contact@insoft.com
www.insoft.com

