



PIR/TOF Sensor

The MSD01 is a smart, low-power occupancy sensor that combines PIR (Passive Infrared) and ToF (Time-of-Flight) technologies for occupancy detection. This enables precise motion tracking and accurate distance measurement. The sensor offers flexible installation options with an adjustable 150° rotation angle, which can be adjusted for each of both sensors individually. Its hardware is ideal for utilization analysis in workspaces and enclosed areas such as phone booths.

KEY FEATURES

Dual Sensor Technology: PIR and ToF technology for accurate occupancy detection

Precise Distance Measurement: Detection range from 20 mm to 2500 mm with an accuracy of ± 10 mm

Flexibly Adjustable Angle: 150° rotation for optimal coverage

TECHNICAL SPECIFICATIONS

Dimensions: Ø110 mm x \varnothing 34 mm

Weight: 75 g

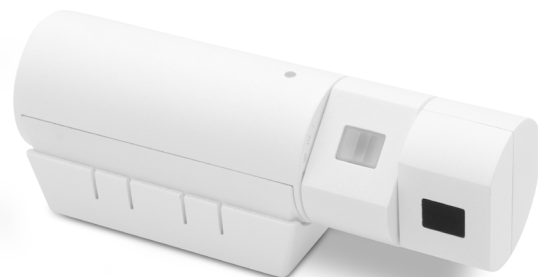
Power supply: 2700 mAh lithium battery (replaceable)

Bluetooth-Version: BLE 5.0

Transmission Distance: 150 m (open environment)

Battery Life: Up to 3 years

Operating Temp.: -10°C bis +45°C



Operating Humidity: $\leq 95\%$ RH, non-condensing

ToF Parameters: FOV: 27°
Measuring Range: 20 mm - 2500 mm

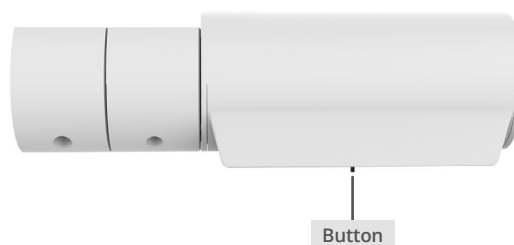
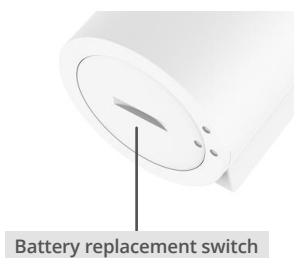
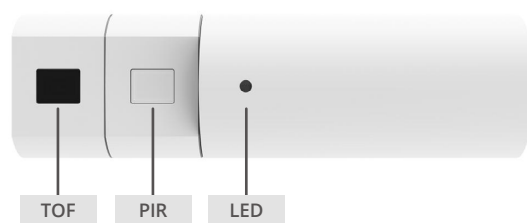
PIR Parameters: FOV: Horizontal 100°, Vertical 20°
Sensing Distance: 3 m

Installation: Double-sided adhesive tape or magnetic mount

Certification: CE, FCC

OPERATION & INSTALLATION

Power On:	Press and hold the button for 5 seconds
Power Off:	Press the button, then hold it again until the LED turns off
Tamper Protection:	Triggers an alert if the device is removed from its mounting
Battery Replacement:	Simple twist mechanism on the device side
LED:	Blue LED signals detection and status
Occupancy Display:	If occupancy is detected, the blue LED remains lit until the space is vacated



Imprint

© **insoft GmbH 2025**. This content is protected by copyright. All rights to content and design are with insoft GmbH. You may not copy, republish, modify or transfer this work without prior written and agreed consent of insoft. Our content is regularly edited and carefully checked. However, we do not accept any liability with respect to the correctness, completeness and current status of the information offered here. All mandatory legal details can be found under: www.insoft.com/company/contact



insoft GmbH
Junkers-Ring 10A
85098 Großmehring
Germany

Contact
Phone +49 8407 939 680 0
Fax +49 8407 939 680 12
contact@insoft.com
www.insoft.com