

## infsoft CAFM

Professional space and facility management today requires more than simply managing rooms, workspaces, and floor plans. Organizations need a reliable data foundation, transparent processes, and intelligent workflows to efficiently plan and optimize space utilization, coordinate services according to demand, and support site managers in both operational and strategic decision-making.



### Space Management and Digital Twin

infsoft CAFM creates a digital twin of buildings, rooms, and workspaces. Based on digital floor plans and a structured data model, spaces can be centrally managed and enriched with relevant information such as capacities, occupancy data, cost centers, and sensor assignments.

### Services and Move Management

Site- and space-related service processes can be managed centrally and efficiently. This includes move processes for individual employees as well as entire departments, covering planning, requirements management, scheduling, and the automated assignment of tasks to internal teams and external service providers.





## Sensors, Occupancy and Analytics

Real-time occupancy data is combined with advanced analytics to provide actionable insights. Sensors capture the actual utilization of rooms and workspaces, creating transparency around occupancy rates, no-shows, and usage. Integrated with infsoft Analytics, this data powers dashboards and reports that optimize space utilization and workplace management.

The collected data can be prepared and delivered in a targeted way to different stakeholder groups. Typical user groups include:

### Real Estate Management

Real estate teams benefit from a consolidated view of the entire space portfolio. They can manage sites, buildings, floors, and rooms in a structured way, evaluate capacities, and make informed strategic decisions regarding space demand, consolidation, reorganization, or site development based on reliable data.

### Facility Management

Facility management teams benefit from transparent processes, digital floor plans, and space-related service information. Cleaning, maintenance, move, or fit-out processes can be coordinated in a traceable way and directly linked to specific rooms, workspaces, or areas.

### Workplace Management

Workplace teams can centrally manage desk assignments, workspace availability, occupancy levels, and move processes. The platform supports both operational individual moves and larger organizational changes such as team or department relocations.

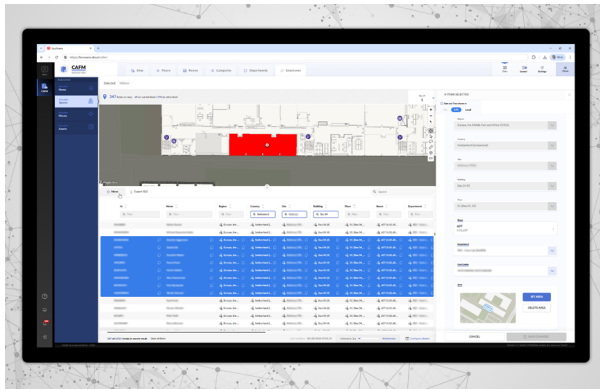
### Site Leads

Site managers gain a real-time overview of current space utilization, open service processes, ongoing moves, capacity data, and site-specific KPIs. All information is provided in the context of the selected site, building, or floor.

### Service Provider

External or internal service providers can be integrated into defined process steps. This includes, for example, moving companies, cleaning teams, IT support, mailrooms, signage teams, or facility services. Tasks, notifications, and status updates are managed via checklists and structured workflows.



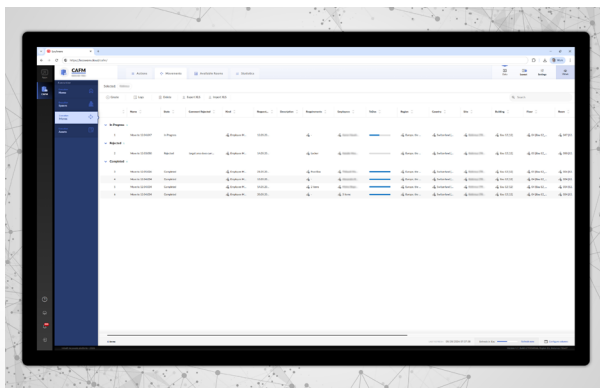
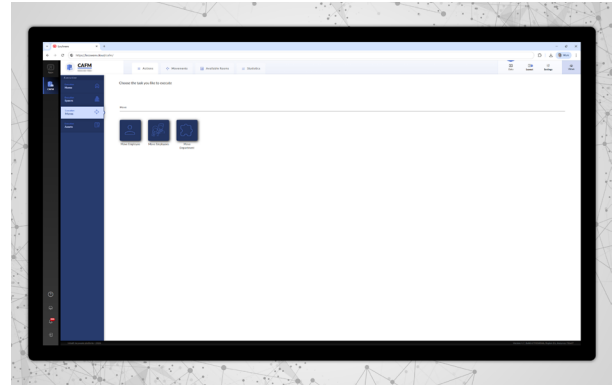


## Move Employees

Coordination of multiple employee moves, for example in the context of team changes, reorganizations, or site-related adjustments.

## Move Department

Support for departmental relocations, including organizational data, target areas, capacity considerations, and involved stakeholders.

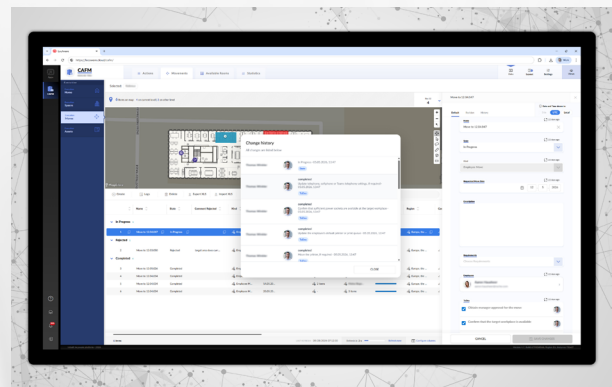


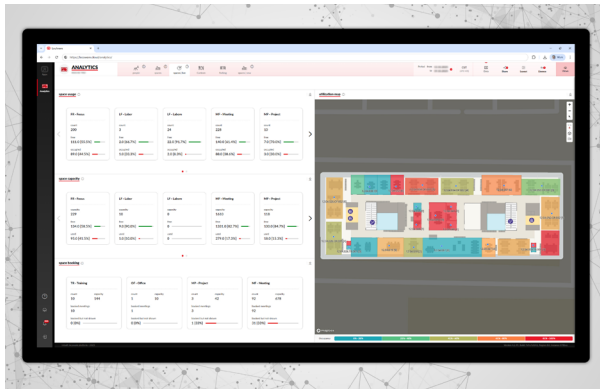
## Space-Based Service Coordination

Coordination of services such as cleaning, moves, workspace preparation, signage, IT provisioning, mail handling, lockers, and other site-specific requirements.

## Activity Log & Audit Trail

Traceable documentation of status changes, completed tasks, notifications, email actions, and other process-relevant activities.





## Integrations & Analytics

Bidirectional integration with systems such as ServiceNow, Entra ID, HR platforms, and ticketing solutions. Analytics enable evaluation of space utilization, occupancy, no-shows, and optimization potential.

## Implementation

The foundation of insoft CAFM is the digital building and space twin within the insoft LocAware platform®. Using the insoft Maps Editor, floor plans can be created, imported, or processed. Depending on the available data sources, AutoCAD files, Revit-based building information models, GeoJSON structures, or existing CAFM and real estate data sources can be integrated seamlessly. Core spatial entities are managed through Space IDs. A Space ID represents a mapped and georeferenced area within the platform and can be enriched with a wide range of attributes, including room type, capacity, square footage, occupancy factor, number of workstations, department assignment, sensor references, and service-related information.

The CAFM data structure can be organized hierarchically, for example:

**Region → Country → Site → Building → Floor → Room / Space → Workstation**

This structure enables both centralized management of global real estate portfolios and operational handling of individual buildings, floors, rooms, and workspaces.

Process-related workflows are supported by insoft Automation. This allows organizations to digitize and automate checklists, manual tasks, notifications, emails, API calls, status changes, and integrations with third-party systems. All activities are documented transparently and can serve as an audit trail for move management and facility service processes.

Optionally, insoft AI Occupancy Sensors can be integrated to provide real-time occupancy data. These insights can be used for auto-release workflows, no-show detection, demand-based cleaning, and strategic space utilization analysis.

## Additional Hardware for CAFM and Move Processes

For classic CAFM and move processes, no sensor infrastructure is required. However, if occupancy data, no-show detection, auto-release functions, or usage-based services are to be integrated, the following hardware can be deployed:

### insoft Locator Node Dongle



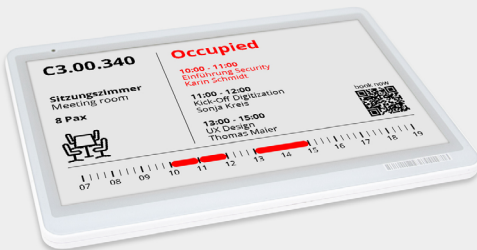
Compact Wi-Fi gateway hardware for BLE components.

### insoft AI Occupancy Sensor



Enables intelligent person and object recognition through artificial intelligence-supported analysis.

### E-Ink Display Beacon



Bluetooth Low Energy component with tricolor E-Ink display and LED indicator.

OR: any third-party solution, implemented via API



More information

• [insoft CAFM](#)

## Deployed Software



insoft Maps Editor



insoft Analytics



insoft Workplace Experience

### Imprint

© insoft GmbH 2026. This content is protected by copyright. All rights to content and design are with insoft GmbH. You may not copy, republish, modify or transfer this work without prior written and agreed consent of insoft. Our content is regularly edited and carefully checked. However, we do not accept any liability with respect to the correctness, completeness and current status of the information offered here. All mandatory legal details can be found under: [www.insoft.com/company/contact](http://www.insoft.com/company/contact)



**insoft GmbH**  
Junkers-Ring 10A  
85098 Großmehring  
Germany

**Contact**  
Phone +49 8407 939 680 0  
Fax +49 8407 939 680 12  
[contact@insoft.com](mailto:contact@insoft.com)  
[www.insoft.com](http://www.insoft.com)