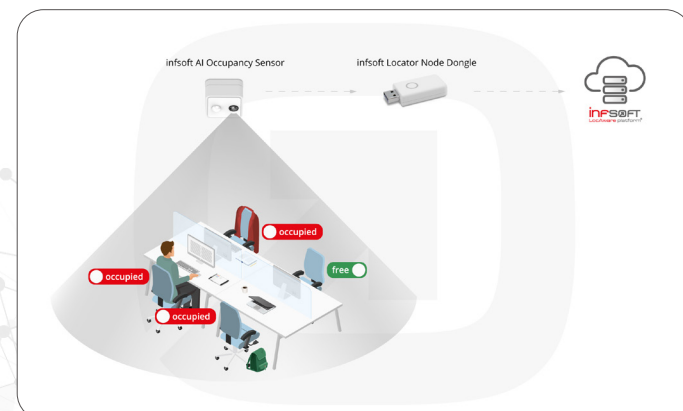


Full-Service Platform Solutions for Enterprises

Today's work atmosphere is characterized by evolution, as conventional workplace models give way to flexible seating arrangements. Consequently, optimal utilization and efficient management of the premises resources are critical. insoft supports enterprises with a complete solution consisting of simple and low-maintenance infrastructure components as well as scalable and powerful platform solutions that can be flexibly customized to different use cases.

Utilization and Space Management

insoft Occupancy provides you with real-time insights on the occupancy and utilization of various resources as well as their utilization over time. Real-time evaluations and historical data analysis can both be conducted with the definition of individual tracking intervals. In addition to descriptive diagrams and heat maps, the customizable dashboards provide answers to relevant space management questions and can be exported in configured reports and management summaries.



Occupancy utilization of workplace and room resources

Workplace Experience App

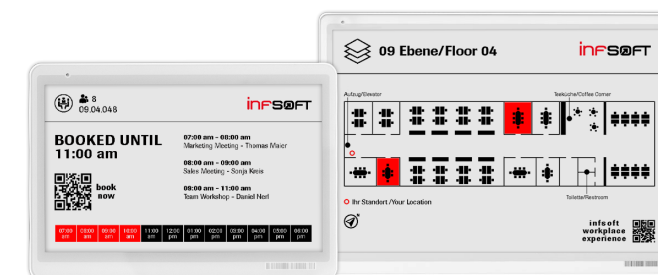
By fostering a stronger connection between users and their office setting, the insoft Workplace Experience App makes workdays more productive. The web and mobile application provides a multitude of features, such as indoor navigation and positioning, room and workplace booking, visitor catering orders with integrated registration, team and workspace planning with seamless calendar system integration, and much more.



Impressions of the Workplace Experience App

Digitale Signaletics

Situational labeling of rooms or lockers, along with accurate occupancy information, are examples of intelligent solutions for dynamic work environments. Battery-powered insoft E-Link Displays come in a range of sizes and allow for automatic signposting, which makes information transparent for both staff and customers.



insoft E-Link Display Beacons

Inventarisierung & Asset Tracking

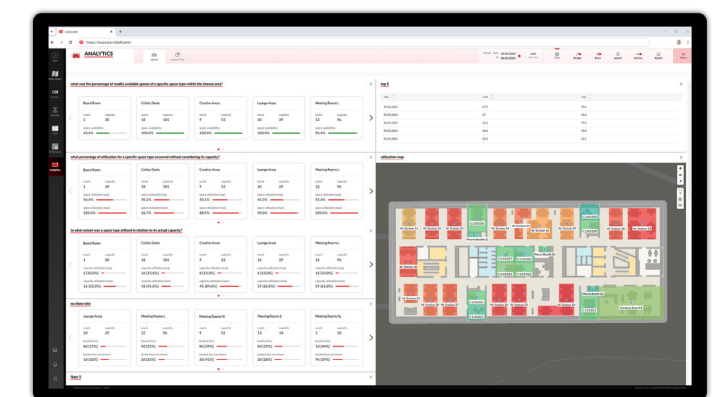
Inventory & Tracking helps you manage assets more easily and effectively as well as efficiently. Wafer-thin paper tags, for instance, can be used to count and continuously record assets. High-performance asset tracking systems enable high process transparency, availability, and proper resource allocation.

The centerpiece of the insoft solution portfolio is the insoft LocAware Platform®, which serves as the



Inventory and localization of assets

primary data hub. The platform includes extensive web applications for managing and visualizing data. To combine internal and external data streams, insoft LocAware provides a bidirectional connection to third-party systems via multiple interfaces. Through the platform, the hardware we sell as well as compatible third-party parts can be controlled.



insoft Occupancy Analytics Dashboard

We assist with all aspects of streamlining your operations, from digital labeling and inventory to space management and staff services.

insoft GmbH
www.insoft.com
contact@insoft.com

