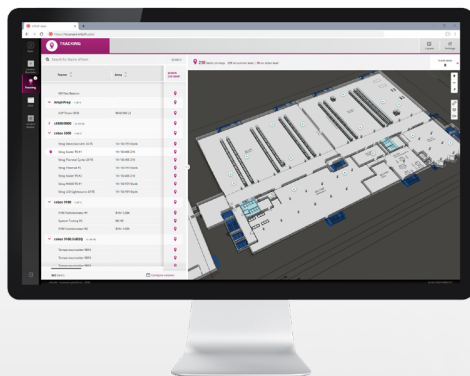




infsoft Lead Time Tracking

With its lead time tracking system, infsoft has developed a powerful solution that monitors processes and documents each individual process step. The solution enables high process transparency, utilization optimization and adherence to delivery dates.

Depending on the industry, the concept of “lead times” can take on different forms. In logistics and manufacturing, the monitoring and optimization of lead times is pivotal to organizing all the processes along the supply chain. Knowing the precise lead time will allow you to commit to a specific delivery date. It is also key to prevent production line shortages. In healthcare, the application can help physicians and nurses reduce the amount of time and resources devoted to management purposes. Process tracking and automation can also be applied to various other sectors such as automotive, office, and retail.



infsoft Lead Time Tracking relies on cost-effective BLE hardware that is easy to install and easy to maintain. An interface to the in-house ERP software facilitates processes and automatically assigns asset details.

Asset Tracking

Mobile goods are tracked at relevant checkpoints. The current position and status can be viewed on a digital map. A dashboard displays dwell times at different process areas.

Digital Labelling

infsoft E-Ink Display Beacons that are attached to the assets can be rewritten automatically with the current status and individual information such as instructions on the next work step.

Geofencing

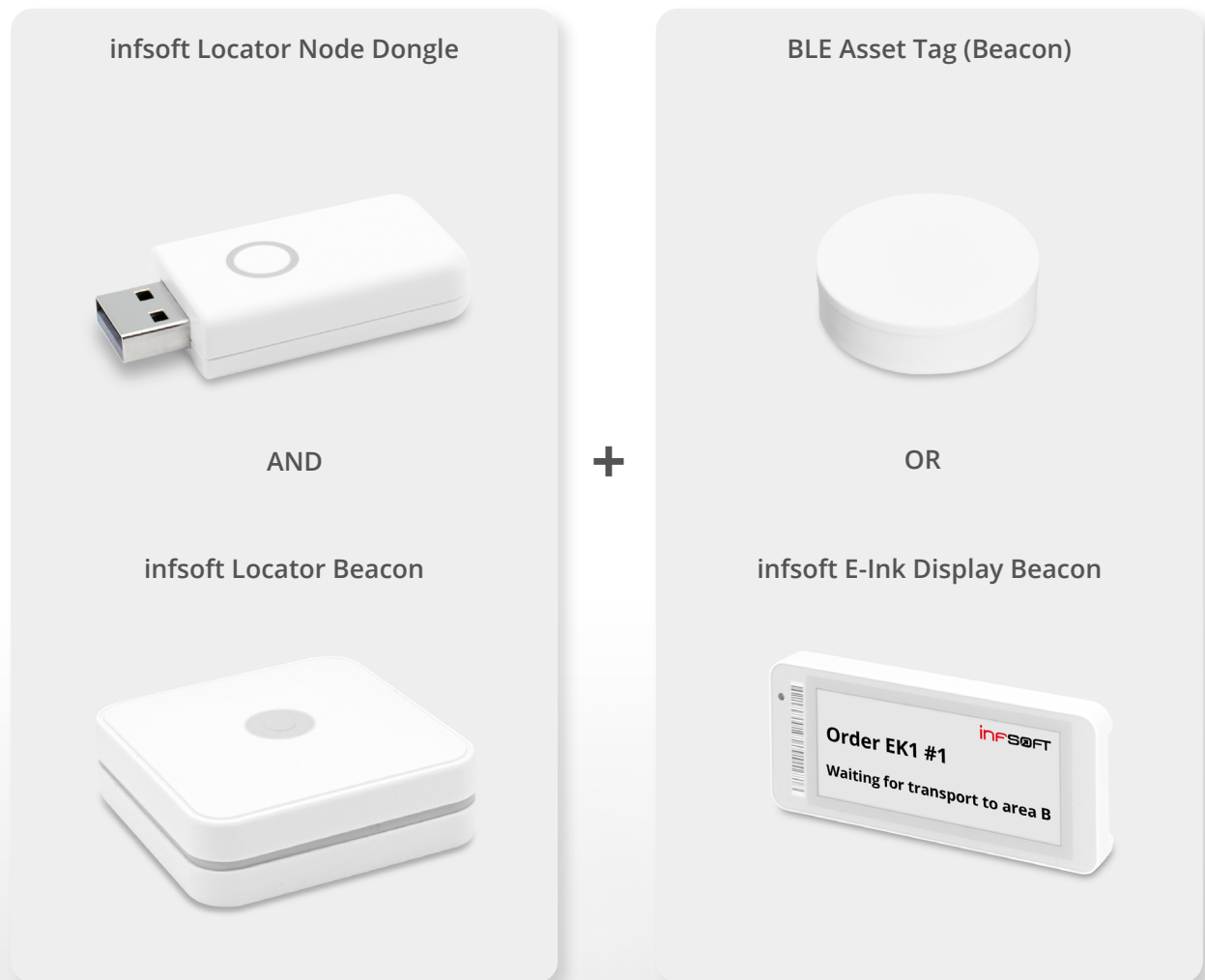
Process steps or asset statuses can be automatically updated via infsoft Automation, e.g. if an asset enters or leaves a defined area or stays in a certain area for a specific amount of time.

Technical Implementation

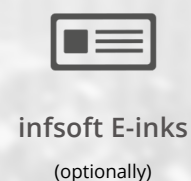
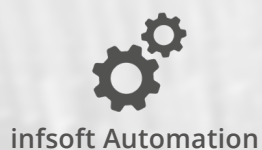
Bluetooth Low Energy beacons or beacons with a display medium (E-Ink Display Beacons) are attached to the assets to be tracked.

insoft Locator Beacons and a small number of insoft Locator Nodes 1400 are installed in the production area. The asset tags' Bluetooth signals are received by the Locator Beacons and sent to the insoft LocAware platform® via a Locator Node.

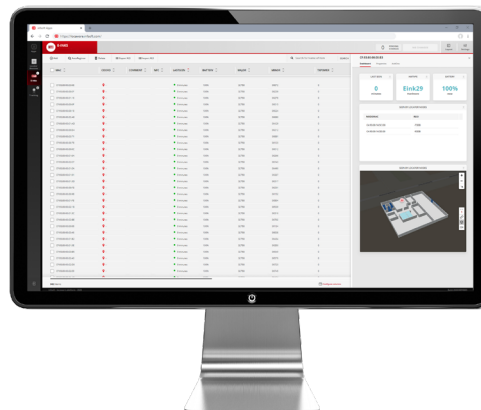
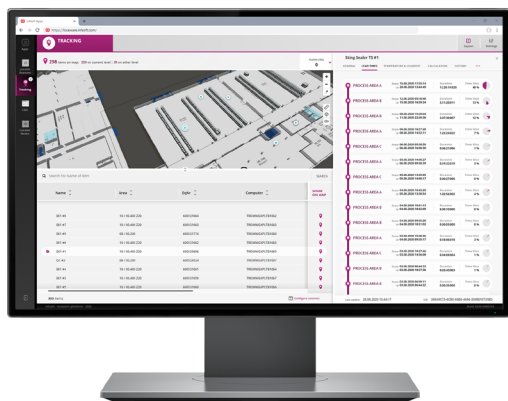
Required Hardware



Deployed Software



insoft Lead Time Tracking | Impressions



Cost Examples

1,000

Assets

€1.74 *

(insoft Tracking, insoft Automation and ERP interface management)

One-time investment:
approx. €62,000

(including hardware, project management, shipping, configuration, and setup of individual ERP interface)

2,500

Assets

€1.07 *

(insoft Tracking, insoft Automation and ERP interface management)

One-time investment:
approx. €103,000

(including hardware, project management, shipping, configuration, and setup of individual ERP interface)

7,500

Assets

€0.77 *

(insoft Tracking, insoft Automation and ERP interface management)

One-time investment:
approx. €226,500

(including hardware, project management, shipping, configuration, and setup of individual ERP interface)

* approx. costs per asset per month



More information

- [insoft Lead Time Tracking](#)

Imprint

© **insoft GmbH 2023**. This content is protected by copyright. All rights to content and design are with insoft GmbH. You may not copy, republish, modify or transfer this work without prior written and agreed consent of insoft. Our content is regularly edited and carefully checked. However, we do not accept any liability with respect to the correctness, completeness and current status of the information offered here. All mandatory legal details can be found under: www.insoft.com/company/contact



Publisher
insoft GmbH
Junkers-Ring 10A
85098 Großmehring
Germany

Contact
Phone +49 8407 939 680 0
Fax +49 8407 939 680 12
contact@insoft.com
www.insoft.com

