

infsOFT Automation



infsOFT Automation

infsOFT Automation is an HTML5-based service, that enables (geo-based) definition of action items along the process chain in real time. Data source can be any sensor technology (such as Wi-Fi, BLE, UWB, RFID, LoRa and GPS) or third-party device management consoles connected to the infsOFT LocAware platform®.

infsOFT Automation | Purpose:

- Definition of alerts and triggers
- Automated actions based on triggers
- Management of recurring tasks



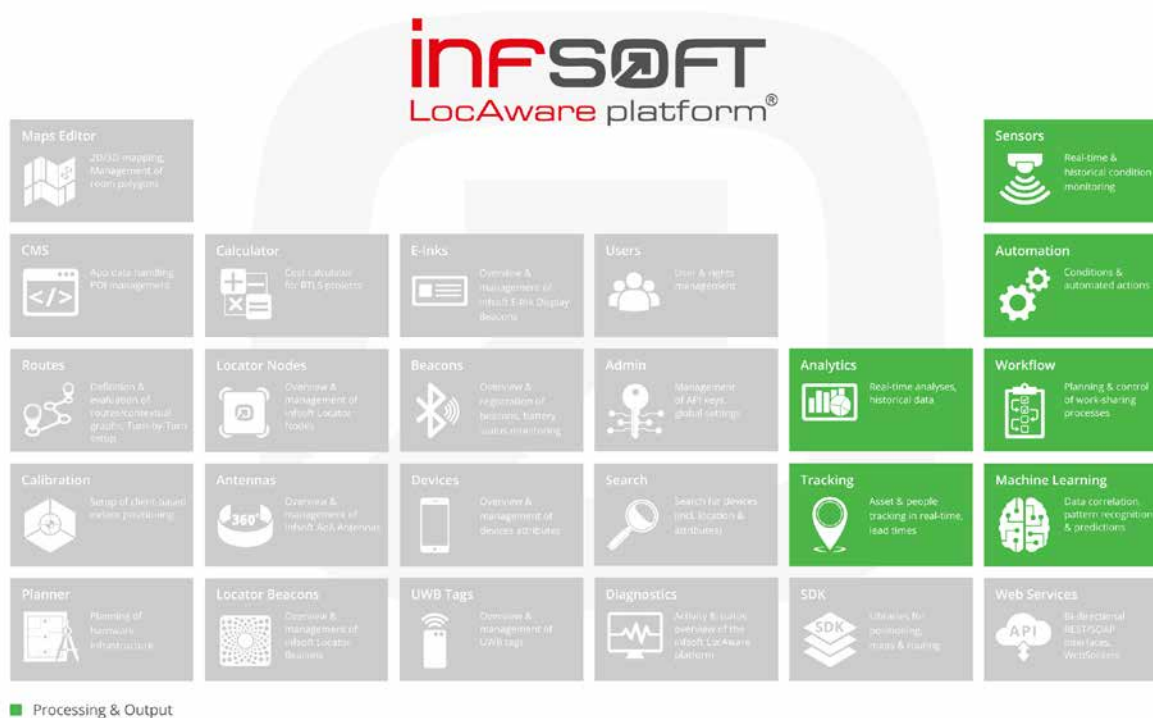
infsOFT Automation | Features:

- Event triggers based on changes of device attributes (e.g. entering an area)
- Definition of recurring tasks
- Push notifications, emails and call of third-party web services
- Visualization of events in list format and map display including push, emails, ...
- Logging of all actions including affected devices
- Console output for all actions
- Scripting Engine with full access to all infsOFT class libraries
- Fully extensible JavaScript engine
- Support of custom libraries and web services (JSON/REST, SOAP/XML, ...)

insoft Automation | Related services:

insoft Automation can exchange information bidirectionally with the following insoft services:

- insoft Analytics
- insoft Tracking
- insoft Sensors
- insoft Workflow
- insoft Machine Learning



insoft Automation | Requirements:

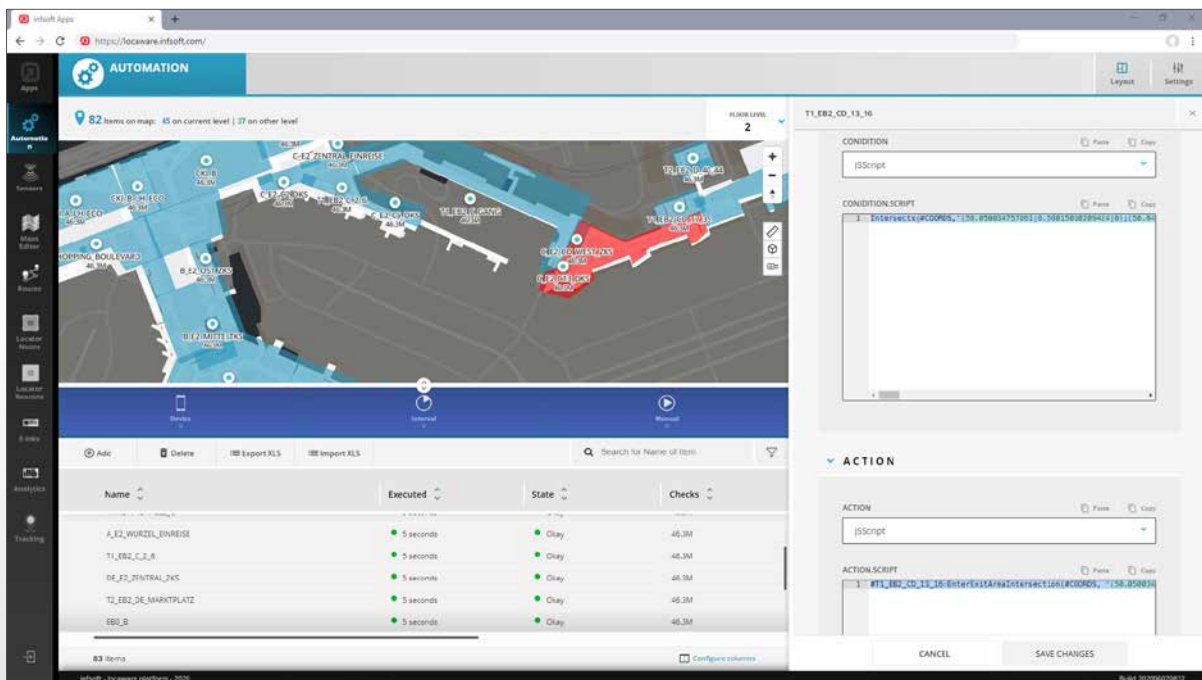
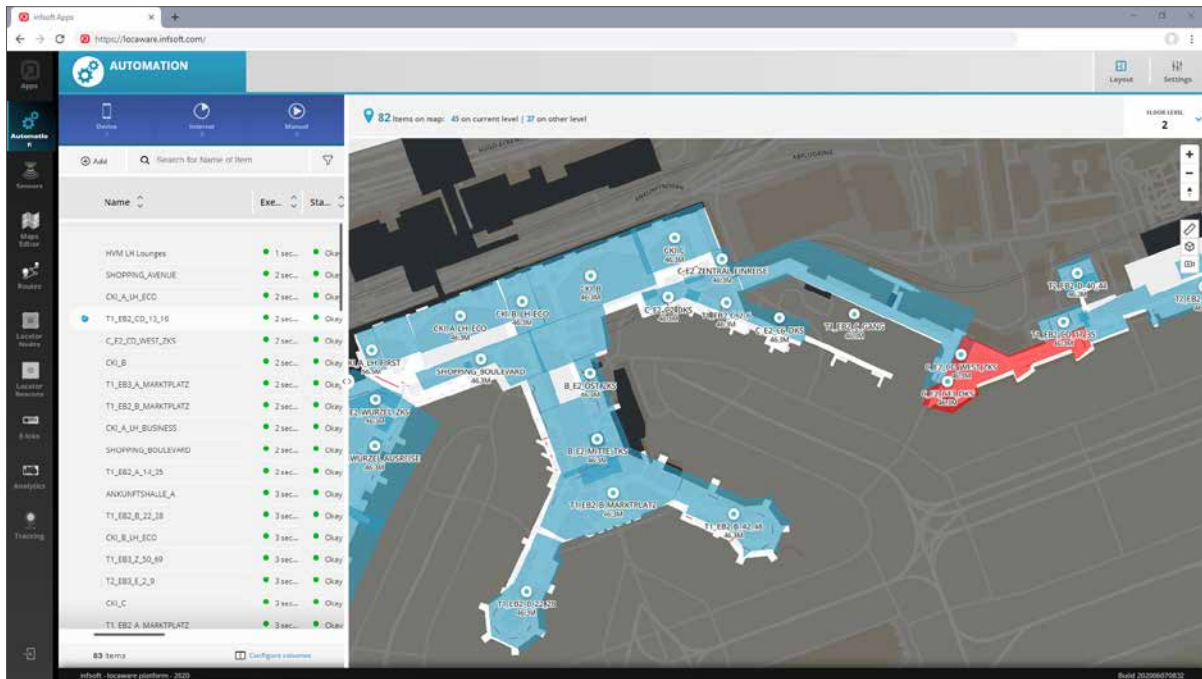
The HTML5 service does not require an installation on the user's PC and is compatible with the following browser versions:

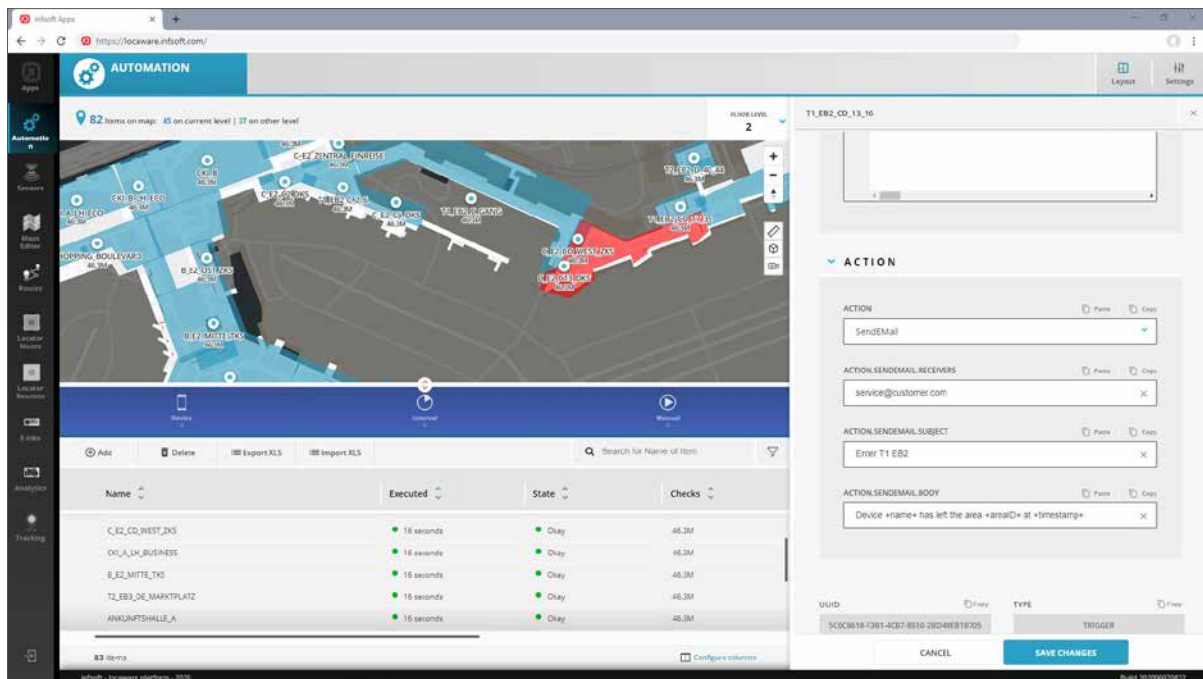
- Chrome (Version 47.0.2526 or newer)
- Firefox (Version 34.0 or newer)
- Safari (Version 7.0 or newer)
- Internet Explorer (Version 11 or newer)
- Edge (Version 13.10122 or newer)



Video: Introducing insoft Automation Software

insoft Automation | Impressions





Imprint

© insoft GmbH 2020. This content is protected by copyright. All rights to content and design are with insoft GmbH. You may not copy, republish, modify or transfer this work without prior written and agreed consent of insoft. Our content is regularly edited and carefully checked. However, we do not accept any liability with respect to the correctness, completeness and current status of the information offered here. All mandatory legal details can be found under: www.insoft.com/company/contact



insoft GmbH
 Junkers-Ring 10A
 85098 Großmehring
 Germany

Contact
 Phone +49 8407 939 680 0
 Fax +49 8407 939 680 12
contact@insoft.com
www.insoft.com

