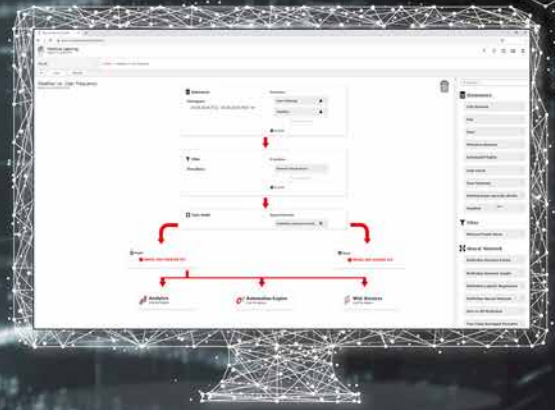


# infsOFT Machine Learning

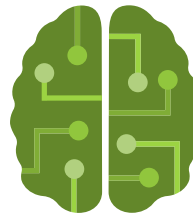


## infsOFT Machine Learning

infsOFT Machine Learning is an HTML5-based service that allows creating user-defined machine learning models, train them within a very short time and use them in a wide variety of applications. Data sources can be any sensor technology (such as Wi-Fi, BLE, UWB, RFID, LoRa and GPS) or third-party device management consoles connected to the infsOFT LocAware platform®.

### infsOFT Machine Learning | Purpose:

- Machine learning algorithms
- Automatic value generation
- Predictive analytics



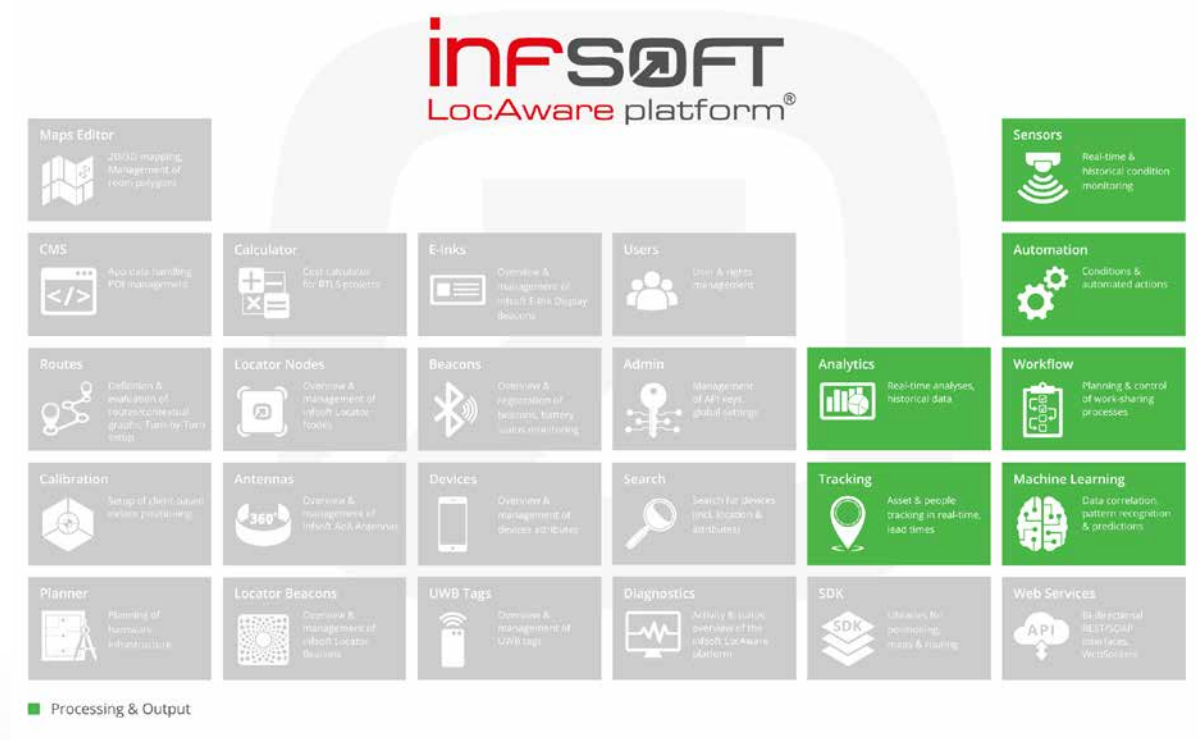
### infsOFT Machine Learning | Features:

- Import of data sets (e.g. sensor/position data, heat maps, temperature values, ...)
- Selection of neural network
- Training of machine learning algorithms
- Automatic value generation
- Use of generated data in infsOFT Processing & Output tools or third-party web services
- Prediction of future values (predictive analytics)
- Collection and delivery of valuation data for error proofing and selection of final methodology
- Definition of different machine learning models to suit various applications
- Support of web services (REST/SOAP)

## infsoft Machine Learning | Related services:

infsoft Machine Learning can exchange information bidirectionally with the following infsoft services:

- infsoft Analytics
- infsoft Tracking
- infsoft Sensors
- infsoft Automation
- infsoft Workflow

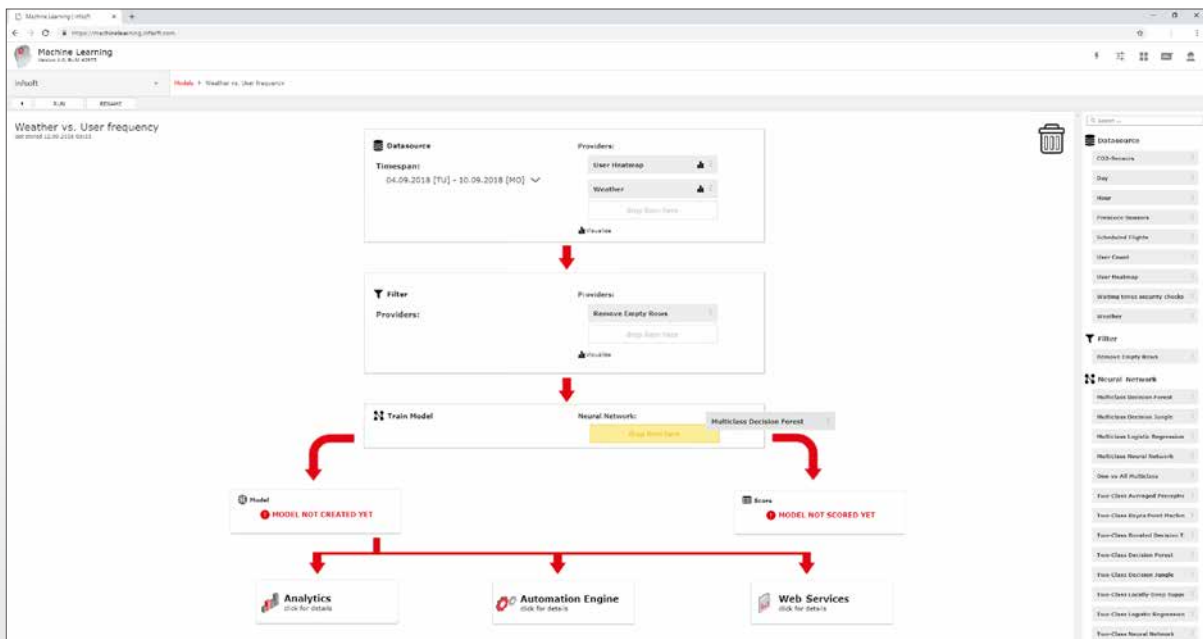
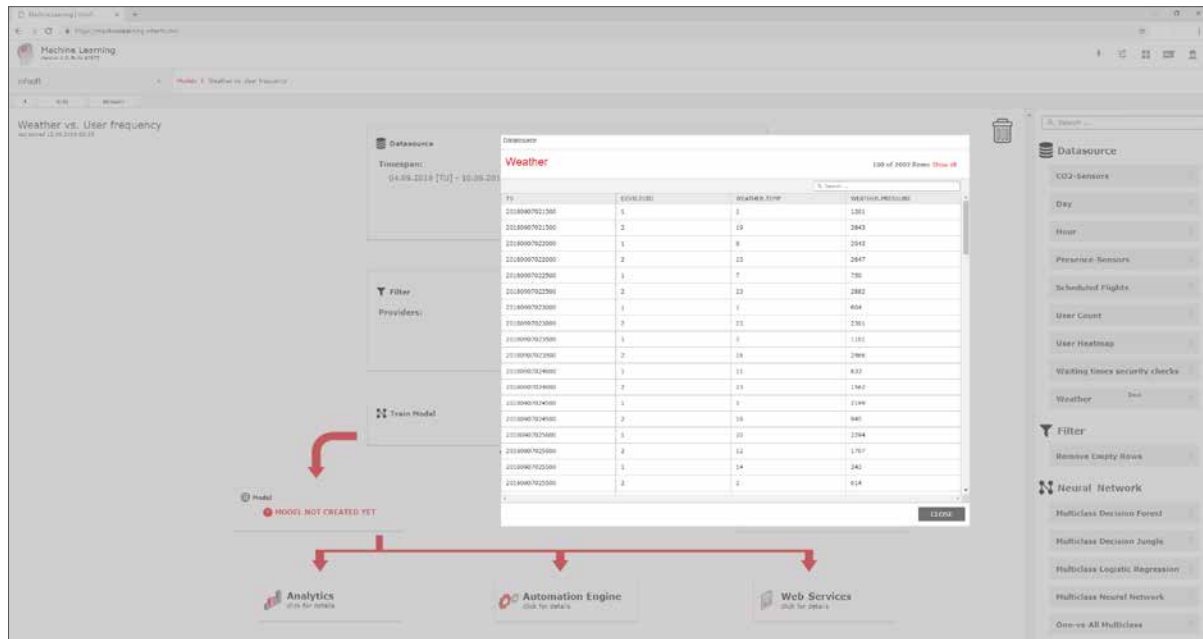


## infsoft Machine Learning | Requirements:

The HTML5 service does not require an installation on the user's PC and is compatible with the following browser versions:

- Chrome (Version 47.0.2526 or newer)
- Firefox (Version 34.0 or newer)
- Safari (Version 7.0 or newer)
- Internet Explorer (Version 11 or newer)
- Edge (Version 13.10122 or newer)

# insoft Machine Learning | Impressions



## Imprint

© insoft GmbH 2020. This content is protected by copyright. All rights to content and design are with insoft GmbH. You may not copy, republish, modify or transfer this work without prior written and agreed consent of insoft. Our content is regularly edited and carefully checked. However, we do not accept any liability with respect to the correctness, completeness and current status of the information offered here. All mandatory legal details can be found under: [www.insoft.com/company/contact](http://www.insoft.com/company/contact)



**insoft GmbH**  
Junkers-Ring 10A  
85098 Großmehring  
Germany

**Contact**  
Phone +49 8407 939 680 0  
Fax +49 8407 939 680 12  
[contact@insoft.com](mailto:contact@insoft.com)  
[www.insoft.com](http://www.insoft.com)

