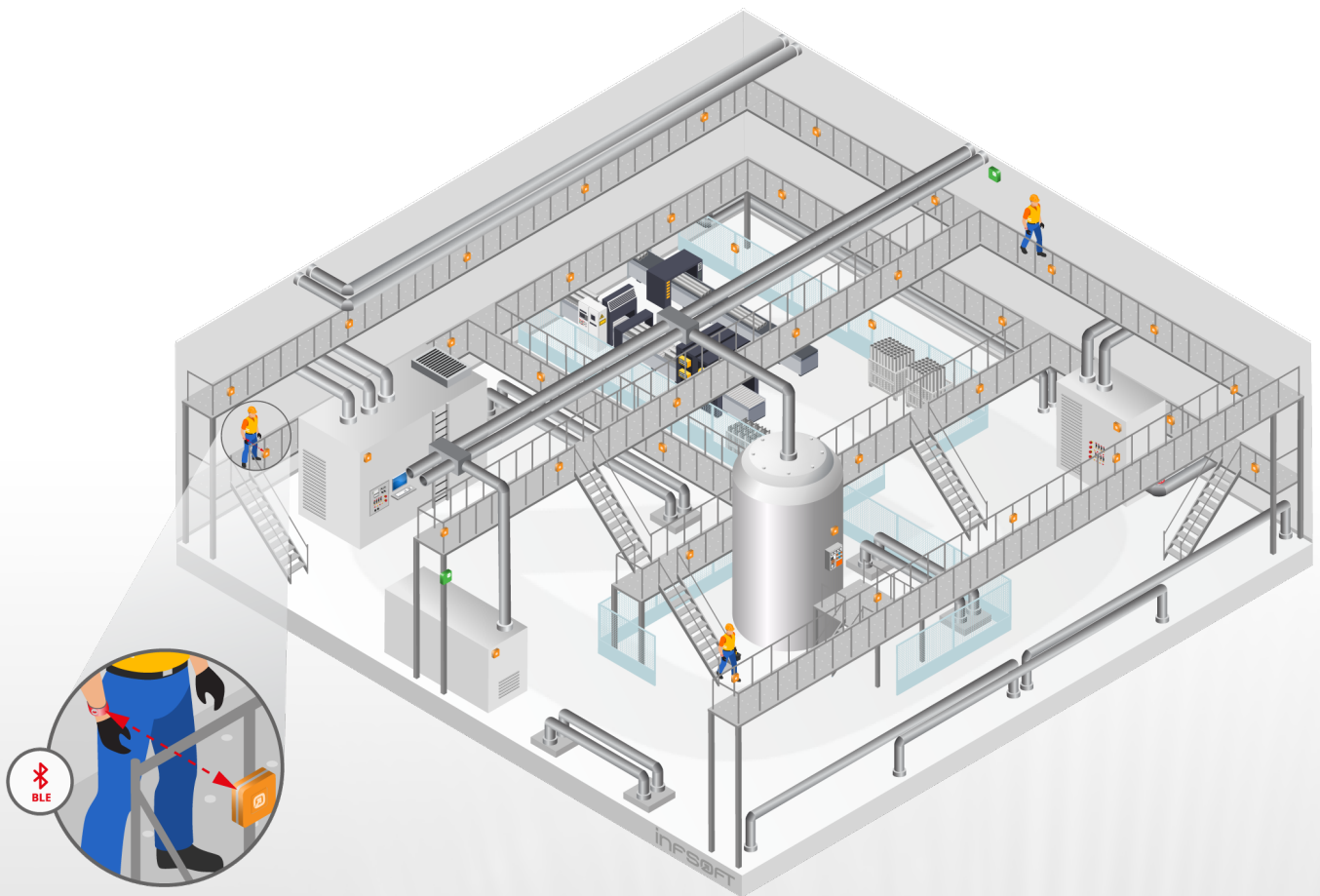


USE CASE

People Tracking System for Industrial Facilities



AT A GLANCE

- visibility of employee location
- geo-based order management



dwells within a defined area (geofence).

TECHNICAL IMPLEMENTATION

insoft Locator Beacons and insoft Locator Nodes 1400 are installed throughout the building. Workforces are equipped with Bluetooth Low Energy (BLE) wristbands that are running the firmware of insoft Locator Beacons. These wristbands detect Bluetooth signals of the fixed Locator Beacons and transmit the data to an insoft Locator Node. From there, the data is sent to the insoft LocAware platform® for positioning. The wristbands can be easily recharged overnight.

Current employee locations can be viewed in insoft Tracking. Individual action logics are defined using insoft Automation.

PROBLEM DEFINITION

Occupational protection and employee safety are major priorities, especially in industrial enterprises. Staff often work out of sight and call range of other people and are therefore exposed to a slightly increased risk potential. Also, in many cases work processes are not adapted to the current locations of the employees. Companies are turning to digital support to ensure the safety of their workforce and streamline operational processes.

SOLUTION

An advanced tracking solution offers visibility of worker location, provides safety features, and boosts operational productivity. Real-time and historical data can be analyzed by management for optimization and improvement of production and operational costs. Tasks can be assigned based on the current location of the employee. Smart Bluetooth wristbands enable location tracking and offer integrated motion sensors as well as an SOS button that can be pressed in case of an emergency to transmit an alert including the employee's current position. Zone-based actions can be initiated whenever a tracked worker enters, exits, or

Imprint

© insoft GmbH 2021. This content is protected by copyright. All rights to content and design are with insoft GmbH. You may not copy, republish, modify or transfer this work without prior written and agreed consent of insoft. Our content is regularly edited and carefully checked. However, we do not accept any liability with respect to the correctness, completeness and current status of the information offered here. All mandatory legal details can be found under: www.insoft.com/company/contact



insoft GmbH
Junkers-Ring 10A
85098 Großmehring
Germany

Contact
Phone +49 8407 939 680 0
Fax +49 8407 939 680 12
contact@insoft.com
www.insoft.com